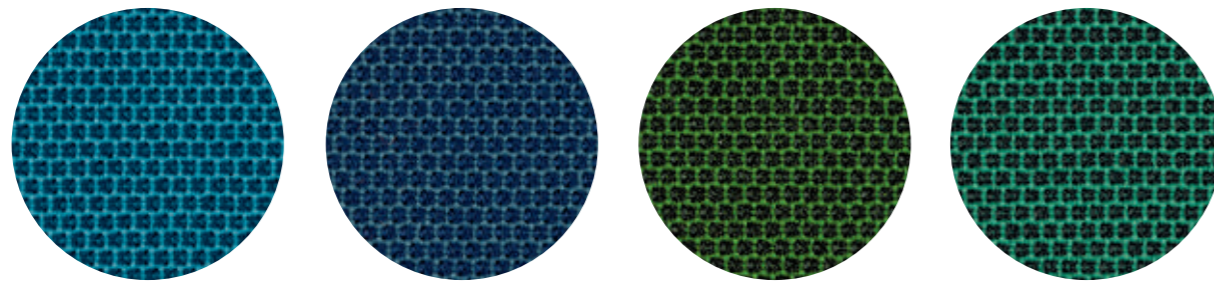


C 101

C 86

C 85

C 89

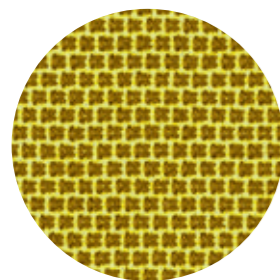


C 83

C 100

C 84

C 88



C 87

technical specifications / specifiche tecniche

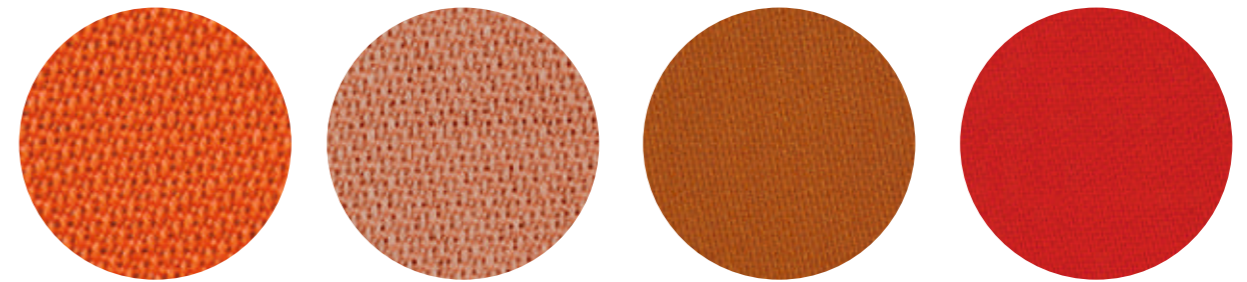


- COMPOSITION / COMPOSIZIONE  
54% New Zealand Wool  
44% Post-consumer recycled, polyester  
2% Polyamide
- ABRASION / ABRASIONE  
100.000 cycles, Martindale  
(EN ISO 12947-2)

- RUBBING FASTNESS / SOLIDITÀ ALLO SFREGAMENTO  
Dry and Wet 4-5, scale 1-5  
(EN ISO 105-X12:1995)
- PILLING  
4-5, scale 1-5 (EN ISO 12945-2)
- LIGHT FASTNESS / SOLIDITÀ ALLA LUCE  
5-7, scale 1-8 (EN ISO 105-B02)

- FLAME RESISTANCE  
RESISTENZA AL FUOCO  
BS EN 1021 1&2  
BS EN 1021-1  
ÖNORM A3800-1  
US CA TB 117-2013

- APPROVED / OMOLOGATO

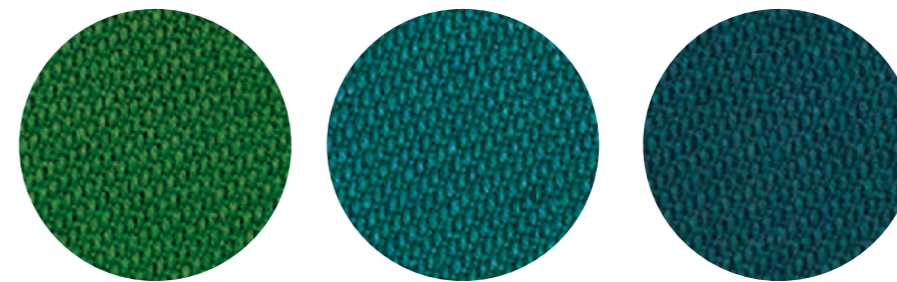


C 110

C 111

C 112

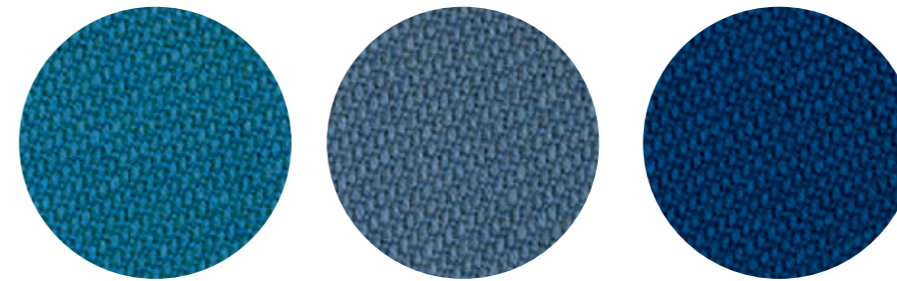
C 113



C 117

C 118

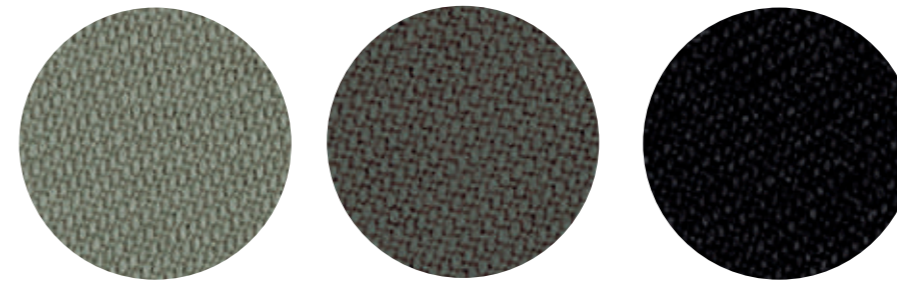
C 119



C 120

C 121

C 122



C 114

C 115

C 116

technical specifications / specifiche tecniche

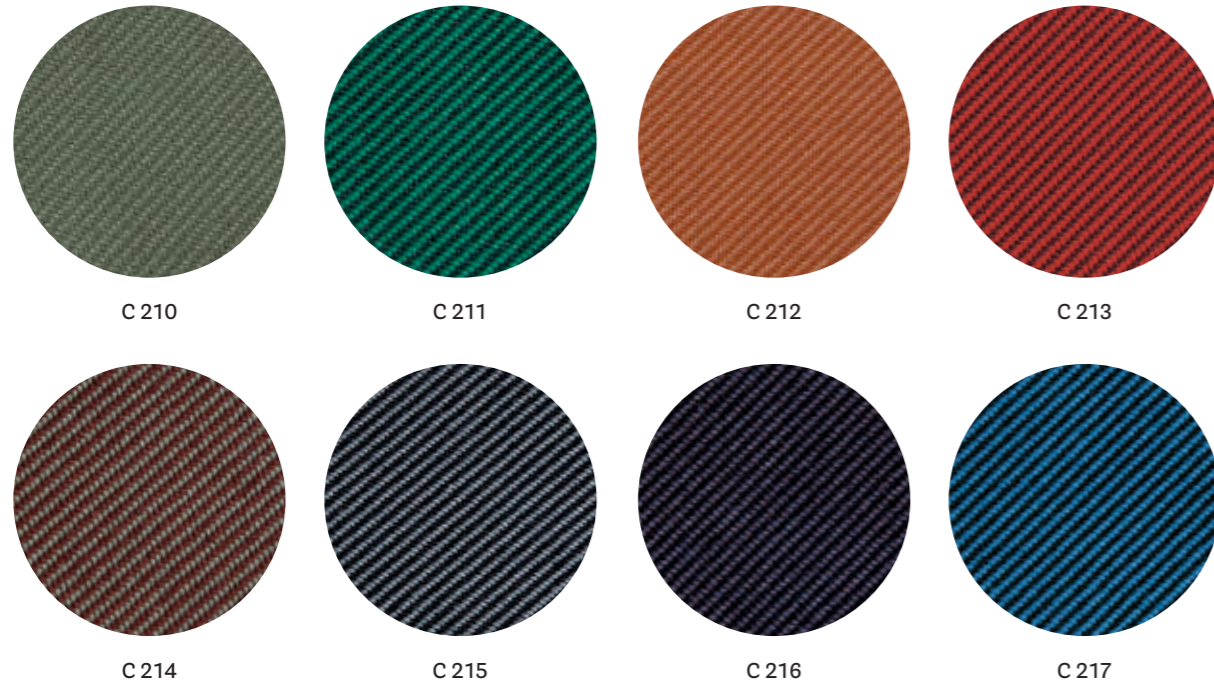
- APPROVED / OMOLOGATO



- COLLECTION / COLLEZIONE  
**svensson-SEMI**
- COMPOSITION / COMPOSIZIONE  
85% Wool, 15% Polyamide
- ABRASION / ABRASIONE  
100.000 cycles,  
Martindale  
(EN ISO 12947-2)
- RUBBING FASTNESS  
SOLIDITÀ ALLO SFREGAMENTO  
Dry 4 and Wet 3-4, scale 1-5  
(EN ISO 105-X12)
- LIGHT FASTNESS  
SOLIDITÀ ALLA LUCE  
5-7, scale 1-8  
(EN ISO 105-B02)
- FLAME RESISTANCE / RESISTENZA AL FUOCO  
BS 5852 Crib 5  
EN ISO 1021 Part 1&2  
IMO FTP Code 2010: Part 8  
UNI 9175 Classe 1 IM  
US CA TB 117-2013



CATEGORY C / CATEGORIA C



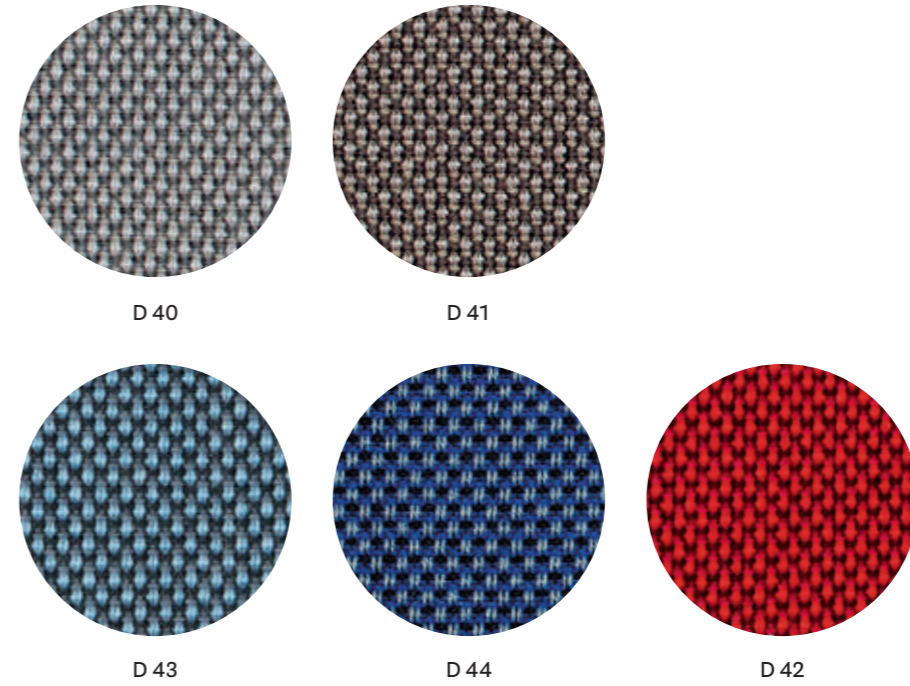
technical specifications / specifiche tecniche



- COLLECTION / COLLEZIONE  
**kvadrat** - RELATE  
DESIGNER Patricia Urquiola
- COMPOSITION / COMPOSIZIONE  
100% TREVIRA CS®
- ABRASION / ABRASIONE  
80.000 cycles, Martindale  
(EN ISO 12947)
- APPROVED / OMOLOGATO
- RUBBING FASTNESS / SOLIDITÀ ALLO SFREGAMENTO  
Dry and Wet 4-5, scale 1-5  
(EN ISO 105-X12)
- PILLING  
4-5, scale 1-5 (EN ISO 12945)
- LIGHT FASTNESS / SOLIDITÀ ALLA LUCE  
5-7, scale 1-8 (EN ISO 105-B02)
- SOUND ABSORPTION / ASSORBIMENTO ACUSTICO  
folded:  $\alpha_w=0.50$  Class D (EN ISO 354)
- FLAME RESISTANCE / RESISTENZA AL FUOCO  
AS/NZS 3837, class 2  
BS 5852 Crib 5  
BS 5852 Part 1 with treatment  
DIN 4102 B1  
EN 1021-1/2  
IMO FTP Code 2010: Part 8  
NF D60-013  
NF P92 507 M1  
NFPA 701  
ÖNORM B1/Q1  
SN 198 898 5.2  
UNI 9177 Classe 1  
US CA TB 117-2013



CATEGORY D / CATEGORIA D

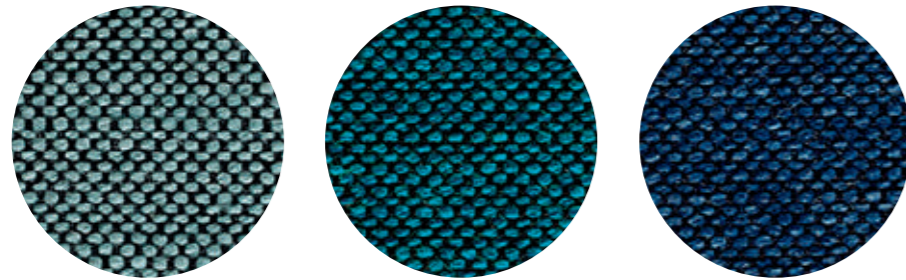


technical specifications / specifiche tecniche



- COMPOSITION / COMPOSIZIONE  
88% New Zealand Wool  
12% Polyamide
- ABRASION / ABRASIONE  
100.000 cycles, Martindale  
(EN ISO 12947-2)
- APPROVED / OMOLOGATO
- RUBBING FASTNESS / SOLIDITÀ ALLO SFREGAMENTO  
Dry and Wet 4-5, scale 1-5  
(EN ISO 105-X12)
- PILLING  
4-5, scale 1-5 (EN ISO 12945-2)
- LIGHT FASTNESS / SOLIDITÀ ALLA LUCE  
5-7, scale 1-8 (EN ISO 105-B02)
- FLAME RESISTANCE / RESISTENZA AL FUOCO  
BS EN 1021 1&2  
BS 5852 Part 1 0, 1  
UNI 9175 Classe 1 IM  
US CA TB 117-2013

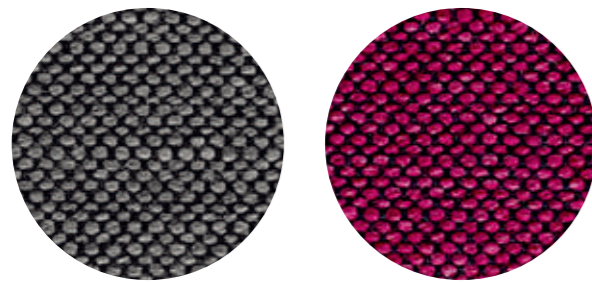




G 154

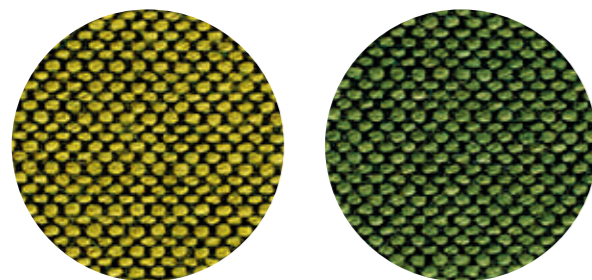
G 155

G 156



G 151

G 150



G 152

G 153

technical specifications / specifiche tecniche

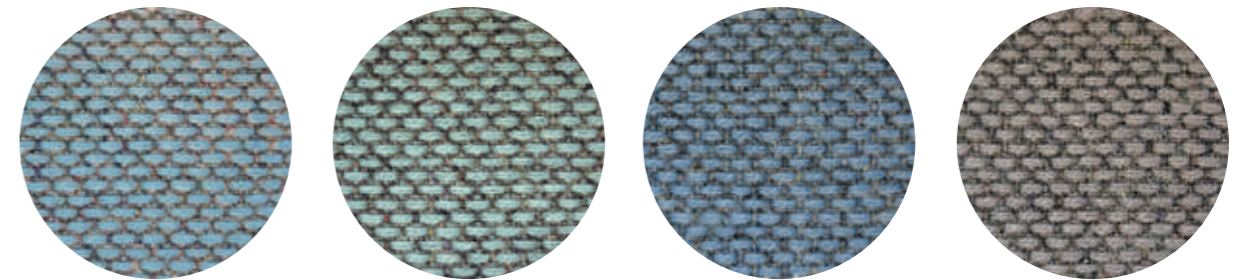


- COLLECTION / COLLEZIONE  
**svensson - BALANCE**
- COMPOSITION / COMPOSIZIONE  
82% Wool  
12% Rami  
6% Polyamide

- ABRASION / ABRASIONE  
100.000 cycles, Martindale (EN ISO 12947-2)
- RUBBING FASTNESS / SOLIDITÀ ALLO SFREGAMENTO  
Dry 4 and Wet 3-4, scale 1-5 (EN ISO 105-X12)
- LIGHT FASTNESS / SOLIDITÀ ALLA LUCE  
5-7, scale 1-8 (EN ISO 105-B02)

- FLAME RESISTANCE / RESISTENZA AL FUOCO  
BS 5852 Crib 5  
EN ISO 1021 Part 1&2  
IMO FTP Code 2010: Part 8  
UNI 9175 Classe 1 IM  
US CA TB 117-2013

- APPROVED / OMOLOGATO

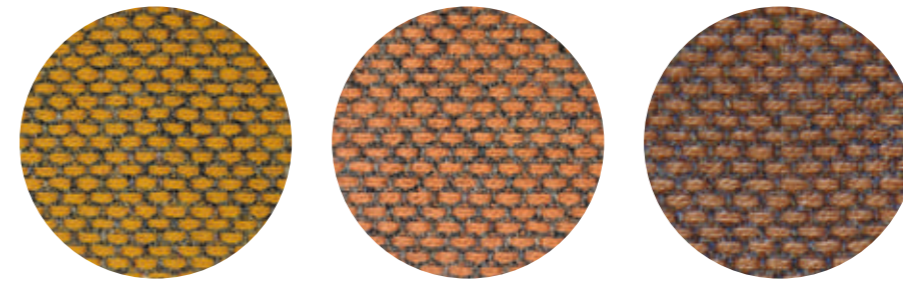


G 143

G 145

G 144

G 146



G 140

G 141

G 142

technical specifications / specifiche tecniche



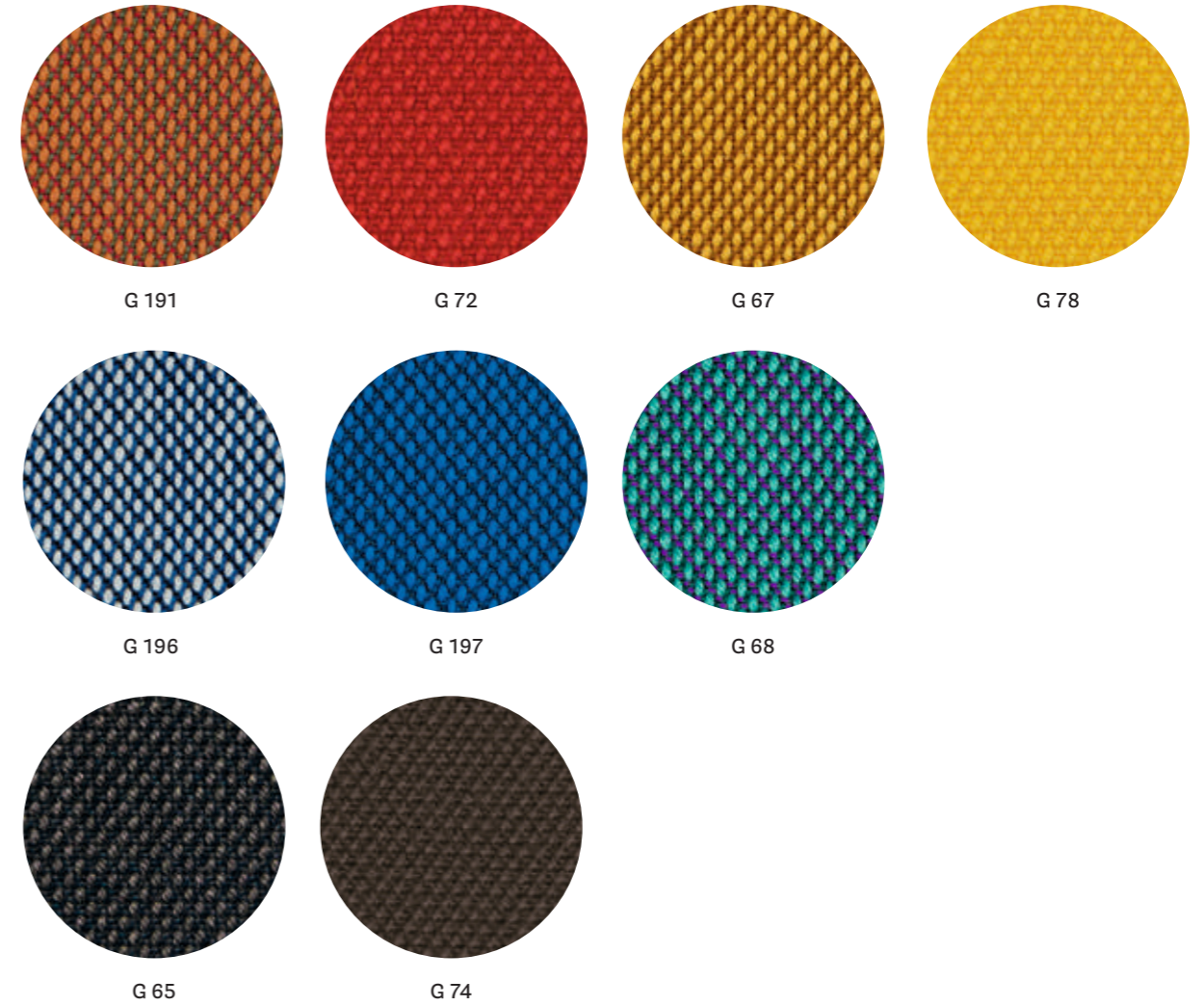
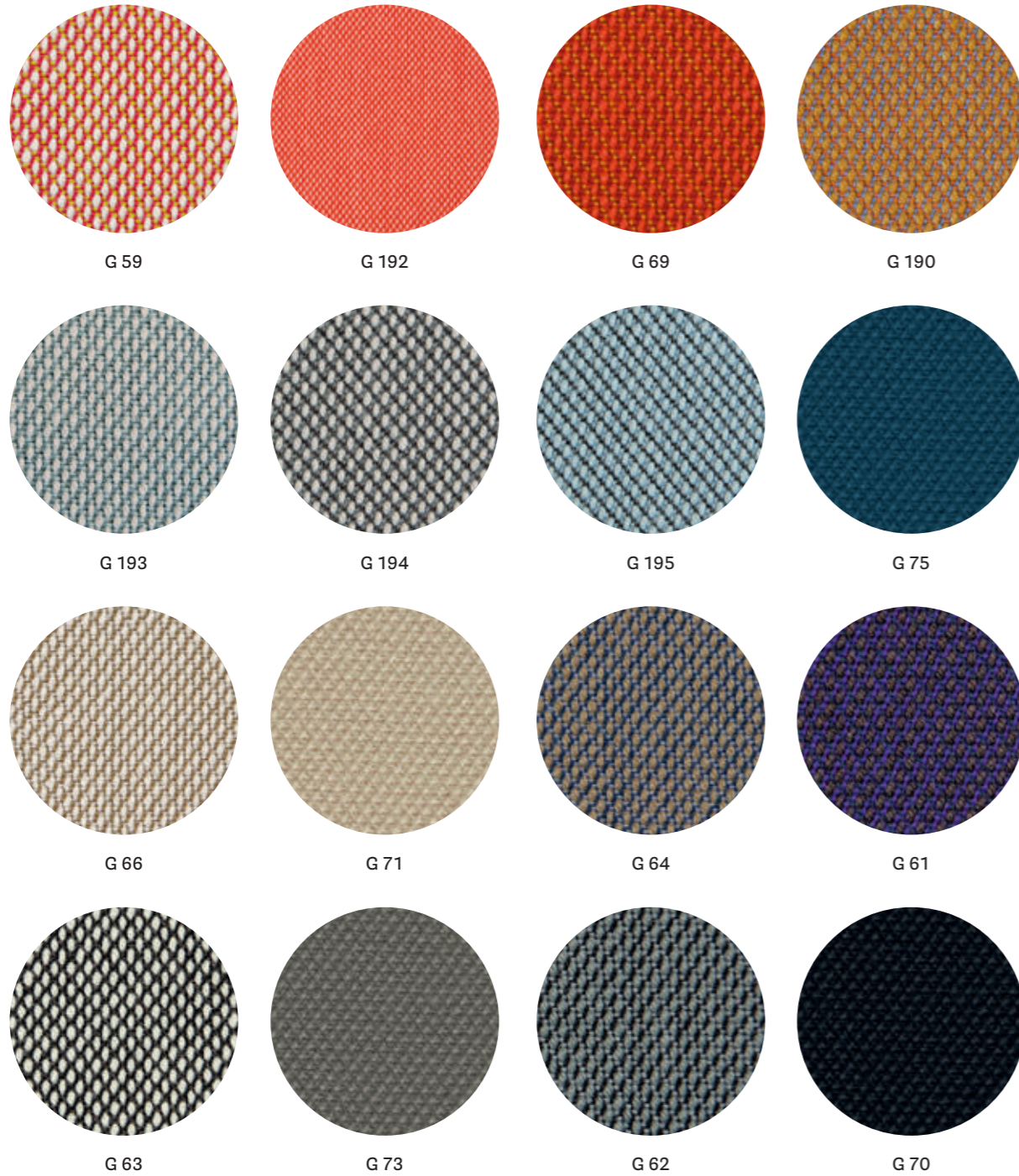
- COLLECTION / COLLEZIONE  
**kvadrat - RE-WOOL**  
DESIGNER Margrethe Odgaard
- COMPOSITION / COMPOSIZIONE  
45% Recycled wool  
45% New wool  
10% Nylon
- ABRASION / ABRASIONE  
50.000 cycles, Martindale (DS/EN ISO 12947-2:2016)

- RUBBING FASTNESS / SOLIDITÀ ALLO SFREGAMENTO  
Dry and Wet 4-5, scale 1-5 (ISO 105-X12)
- PILLING  
4, scale 1-5 (EN ISO 12945)
- LIGHT FASTNESS / SOLIDITÀ ALLA LUCE  
5-7, scale 1-8 (ISO 105-B02:2014)
- SOUND ABSORPTION / ASSORBIMENTO ACUSTICO  
folded:  $\alpha_w = 0.75$  Class C (ISO 11654)

- FLAME RESISTANCE / RESISTENZA AL FUOCO  
AS/NZS 1530.3  
AS/NZS 3837 Class 2  
BS 5852 Part 1  
BS 5852 Crib 5 with treatment  
BS 5852 IGNITION SOURCE 3  
EN 1021 - 1/2  
IMO FTP Code 2010: Part 8  
NF D60-013  
ÖNORM B1/Q1  
UNI 9175 Classe 1IM  
US CA TB 117-2013

- APPROVED / OMOLOGATO





technical specifications / specifiche tecniche



• COLLECTION / COLLEZIONE

**kvadrat**

G59+G69; G190+G197: STEELCUT TRIO  
G70+G78: STEELCUT  
DESIGNERS Dijkmeijer & Ridolfo

• COMPOSITION / COMPOSIZIONE

90% New wool  
10% Nylon

• ABRASION / ABRASIONE

100.000 cycles; for G70+G78: 80.000 cycles  
Martindale (DS/EN ISO 12947-2:2016)

• PILLING

4, scale 1-5; for G70+G78: 3-4, scale 1-5  
(EN ISO 12945)

• LIGHT FASTNESS / SOLIDITÀ ALLA LUCE

5-7, scale 1-8 (EN ISO 105-B02)

• SOUND ABSORPTION / ASSORBIMENTO ACUSTICO

folded:  $\alpha_w = 0.95$  Class A  
for G70+G78: folded:  $\alpha_w = 0.80$  Class B  
(ISO 11654)

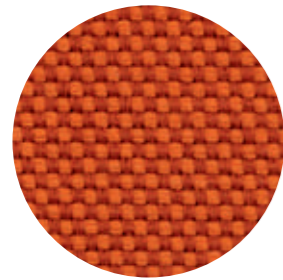
• FLAME RESISTANCE / RESISTENZA AL FUOCO

AS/NZS 1530.3  
AS/NZS 3837 Class 2  
BS 5852 Part 1  
BS 5852 Crib 5 with treatment  
BS 5852 IGNITION SOURCE 3  
EN 1021 - 1/2  
GB 50222 B1 with treatment  
IMO FTP Code 2010: Part 8

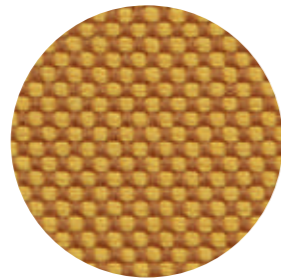
NF D60-013  
NFPA 260  
ÖNORM B1/Q1  
SN 198 898 5.3 with treatment  
UNI 9175 Classe 1 IM  
US CA TB 117-2013

• APPROVED / OMOLOGATO

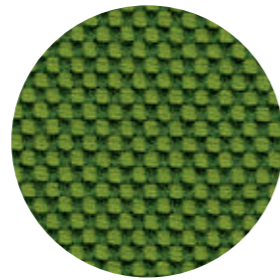




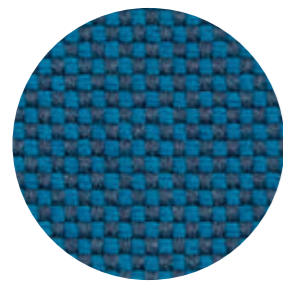
G 170



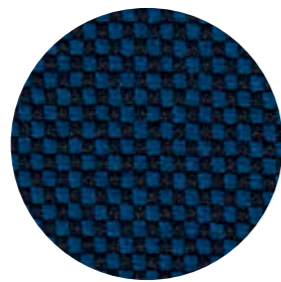
G 171



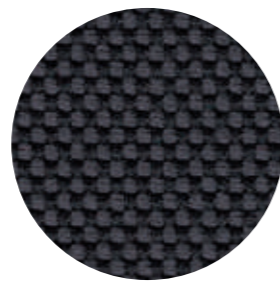
G 172



G 173



G 174



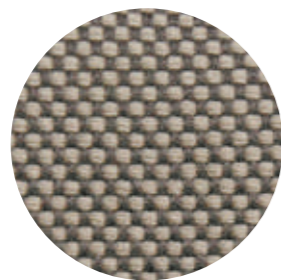
G 175



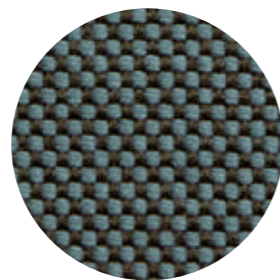
G 176



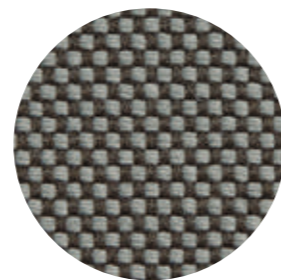
G 210



G 211



G 212



G 213

technical specifications / specifiche tecniche

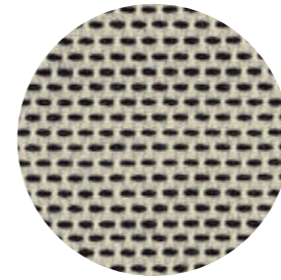


- COMPOSITION / COMPOSIZIONE  
96% Virgin Wool  
4% Polyamide
- ABRASION / ABRASIONE  
90.000 cycles, Martindale  
(DIN EN ISO 12947-2)

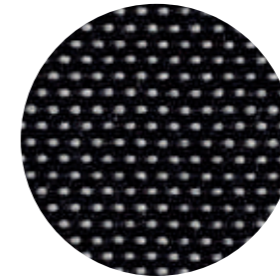
- PILLING  
4-5, scale 1-5 (EN ISO 12945-2)
- LIGHT FASTNESS / SOLIDITÀ ALLA LUCE  
5-8, scale 1-8 (EN ISO 105-B02)
- SOUND ABSORPTION / ASSORBIMENTO ACUSTICO  
folded:  $\alpha_w=0.95$  Class A (ISO 11654)

- FLAME RESISTANCE / RESISTENZA AL FUOCO  
BS 5852:1979 (Part 1)  
BS 5852:2006 (Part 2) Crib 5  
DIN 4102-1 B2  
EN 13501-1  
EN 1021 -1 and -2  
FAR 25.853 (12 sec. vertical)  
IMO: 2014/90/EU (MED)  
US CA TB 117-2013

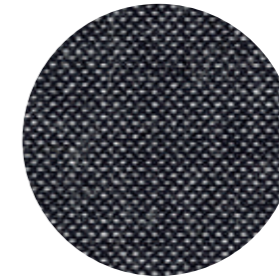
- APPROVED / OMOLOGATO



G 101



G 100



G 102

technical specifications / specifiche tecniche



- COLLECTION / COLLEZIONE  
**kvadrat** - BASEL  
DESIGNERS Herzog & de Meuron
- COMPOSITION / COMPOSIZIONE  
90% New wool  
10% Nylon
- ABRASION / ABRASIONE  
50.000 cycles,  
Martindale (EN ISO 12947-2:1998)

- PILLING  
4, scale 1-5 (EN ISO 12945)
- LIGHT FASTNESS / SOLIDITÀ ALLA LUCE  
6-7, scale 1-8 (ISO 105-B02)
- FLAME RESISTANCE / RESISTENZA AL FUOCO  
AS/NZS 3837 Class 2  
BS 5852 Part 1  
BS 5852 Crib 5 with treatment

- EN 1021 - 1/2  
GB 50222 B1 with treatment  
IMO FTP Code 2010: Part 8  
NFPA 260  
NF D60-013  
ÖNORM B1/Q1  
SN 198 898 5.3 with treatment  
UNI 9175 Classe 1 IM  
US CA TB 117-2013

- APPROVED / OMOLOGATO



CATEGORY G / CATEGORIA G



G 120



G 121



G 122

technical specifications / specifiche tecniche



- COLLECTION / COLLEZIONE  
**kvadrat** - MOLLY  
DESIGNER Åsa Pärson
- COMPOSITION / COMPOSIZIONE  
100% New wool
- ABRASION / ABRASIONE  
75-100.000 cycles,  
Martindale (EN ISO 12947-2:1998)

- PILLING  
3-4, scale 1-5 (EN ISO 12945)
- LIGHT FASTNESS / SOLIDITÀ ALLA LUCE  
6-7, scale 1-8 (ISO 105-B02)
- FLAME RESISTANCE / RESISTENZA AL FUOCO  
BS 5852 Part 1  
BS 5852 Crib 5 with treatment  
EN 1021 - 1/2

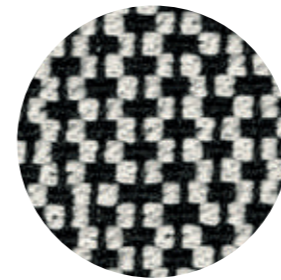
IMO FTP Code 2010: Part 8  
NFPA 260  
NF D60-013  
ÖNORM B1/Q1  
UNI 9175 Classe 1IM  
US CA TB 117-2013

• APPROVED / OMOLOGATO

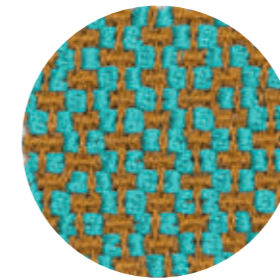


PRODUCT CERTIFIED  
FOR LOW CHEMICAL  
EMISSIONS:  
UL COM/CGG  
UL 2818  
170166-420

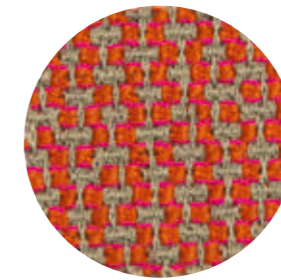
CATEGORY G / CATEGORIA G



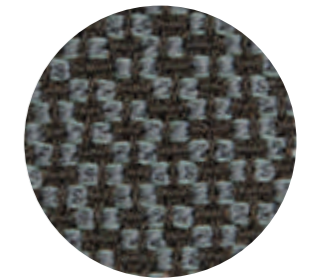
G 130



G 131



G 132



G 133

technical specifications / specifiche tecniche



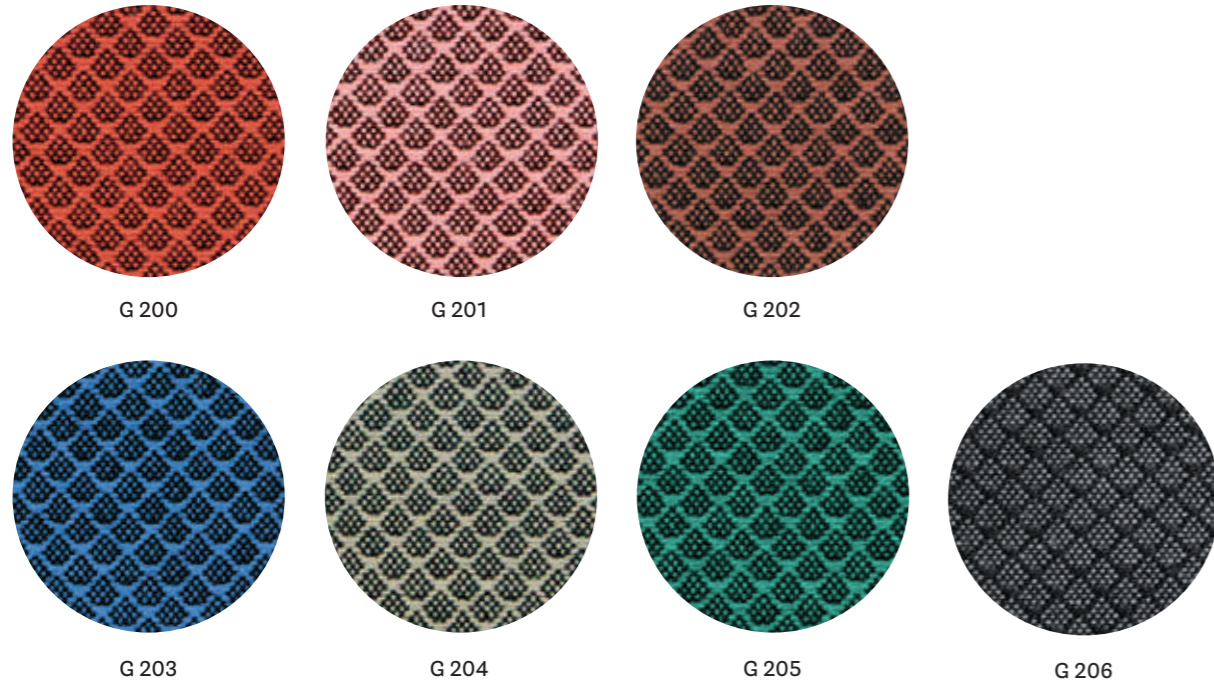
- COMPOSITION / COMPOSIZIONE  
95% Virgin Wool  
5% Polyamide
- ABRASION / ABRASIONE  
52.000 cycles, Martindale  
(DIN EN ISO 12947-2)
- PILLING  
4-5, scale 1-5 (EN ISO 12945-2)

- LIGHT FASTNESS / SOLIDITÀ ALLA LUCE  
5-8, scale 1-8 (EN ISO 105-B02)
- SOUND ABSORPTION / ASSORBIMENTO ACUSTICO  
folded:  $\alpha_w = 0.85$  Class B (ISO 11654)
- FLAME RESISTANCE / RESISTENZA AL FUOCO  
BS 5852:1979 (Part 1)  
BS 5852:2006 (Part 2) Crib 5  
DIN 4102-1 B2

EN 1021 -1 and -2  
EN 13501-1  
FAR 25.853 (12 sec. vertical)  
IMO: 2014/90/EU (MED)  
UNI 9175 Classe 1 IM  
US CA TB 117-2013

• APPROVED / OMOLOGATO





G 200

G 201

G 202

G 203

G 204

G 205

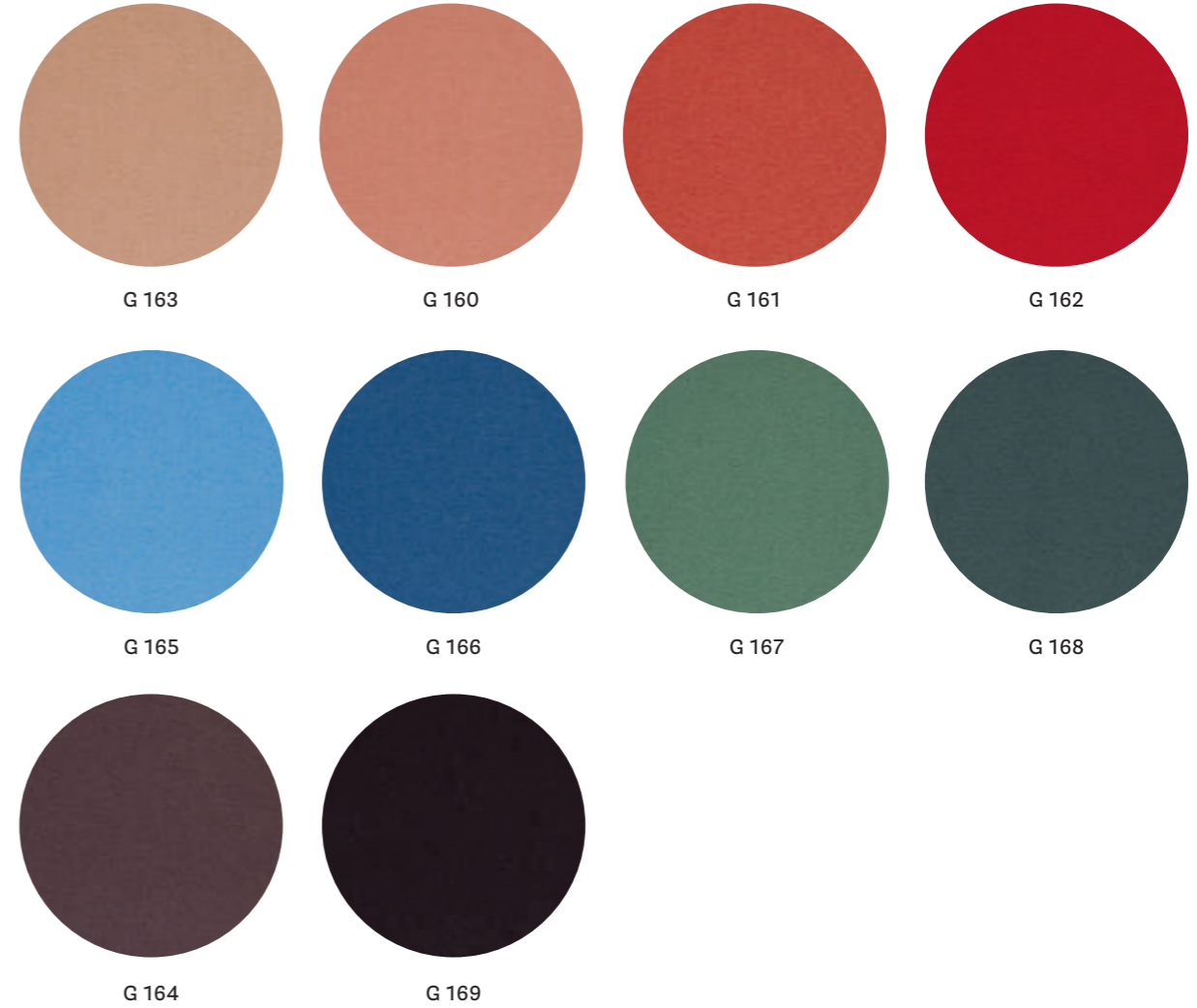
G 206

technical specifications / specifiche tecniche



- COLLECTION / COLLEZIONE  
**kvadrat** - JAALI  
DESIGNER Doshi Levien
- COMPOSITION / COMPOSIZIONE  
92% New wool  
8% Nylon
- ABRASION / ABRASIONE  
80.000 cycles, Martindale  
(EN ISO 12947)
- RUBBING FASTNESS / SOLIDITÀ ALLO SFREGAMENTO  
Dry 4-5 and Wet 3-5, scale 1-5  
(EN ISO 105-X12)
- PILLING  
4, scale 1-5 (EN ISO 12945)
- LIGHT FASTNESS / SOLIDITÀ ALLA LUCE  
6-7, scale 1-8 (EN ISO 105-B02)
- FLAME RESISTANCE / RESISTENZA AL FUOCO  
AS/NZS 1530.3  
BS 5852 Part 1  
BS 5852 Crib 5 with treatment  
BS 5852 ignition source 3  
EN 1021-1/2  
IMO FTP Code 2010: Part 8  
NF D60-013  
SN 198 898 5.3 with treatment  
UNI 9175 Classe 1IM  
US CA TB 117-2013

APPROVED / OMOLOGATO



G 163

G 160

G 161

G 162

G 165

G 166

G 167

G 168

G 164

G 169

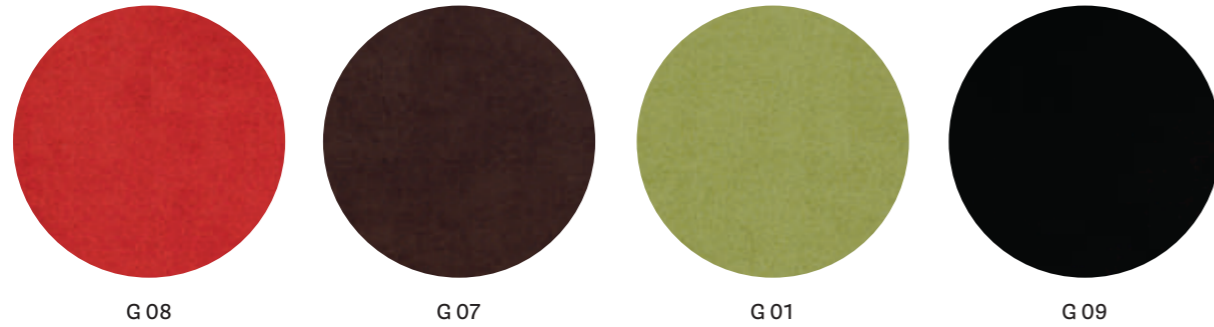
technical specifications / specifiche tecniche



- COLLECTION / COLLEZIONE  
**kvadrat** - HERO  
DESIGNER Patricia Urquiola
- COMPOSITION / COMPOSIZIONE  
96% New wool  
4% Nylon
- ABRASION / ABRASIONE  
45.000 cycles, Martindale  
(EN ISO 12947)
- PILLING  
3-4, scale 1-5 (EN ISO 12945)
- LIGHT FASTNESS / SOLIDITÀ ALLA LUCE  
5-7, scale 1-8 (ISO 105-B02)
- SOUND ABSORPTION / ASSORBIMENTO ACUSTICO  
folded:  $\alpha_w = 0.75$  Class C (ISO 11654)
- FLAME RESISTANCE / RESISTENZA AL FUOCO  
AS/NZS 3837 Class 2  
BS 5852 Crib 5 with treatment  
BS 5852 Part 1  
EN 1021 - 1/2  
IMO FTP Code 2010: Part 8  
IMO FTP Code 2010: Part 7 with treatment
- APPROVED / OMOLOGATO  
NF D60-013  
SN 198 898 5.3 with treatment  
UNI 9175 Classe 1 IM  
US CA TB 117-2013



CATEGORY G / CATEGORIA G

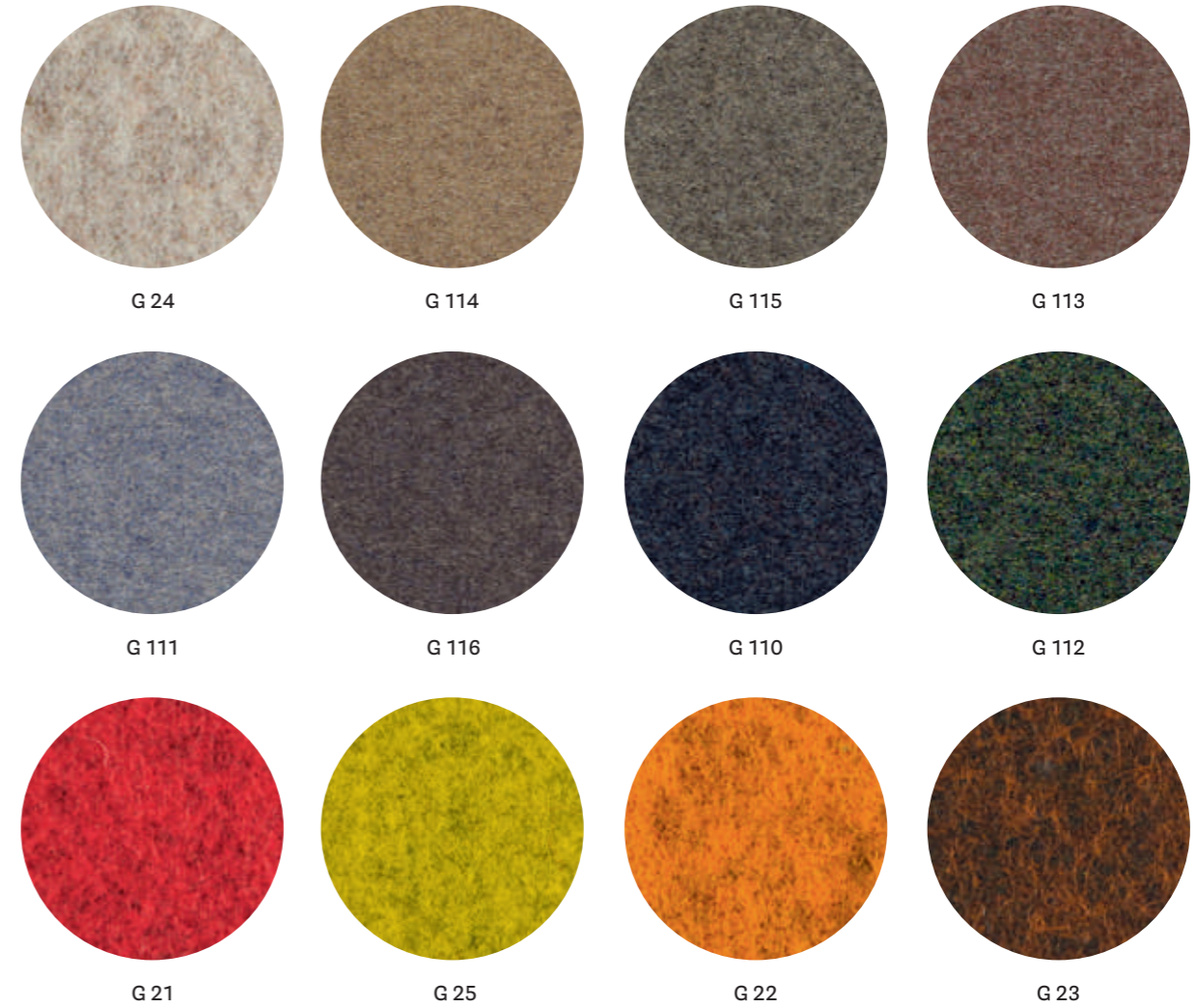


technical specifications / specifiche tecniche



- COMPOSITION / COMPOSIZIONE  
88% Polyester  
12% Polyurethane incl.  
antistatic fibers and fire  
retardant fibers in the backside
- ABRASION / ABRASIONE  
150.000 cycles, Martindale  
(EN ISO 12947)
- PILLING  
5, scale 1-5 (EN ISO 12945)
- LIGHT FASTNESS / SOLIDITÀ ALLA LUCE  
5-6, scale 1-8 (ISO 105-B02)
- RUBBING FASTNESS / SOLIDITÀ ALLO SFREGAMENTO  
Dry and Wet 4/4, scale 1-5  
(EN ISO 105-X12)
- FLAME RESISTANCE / RESISTENZA AL FUOCO  
BS EN 1021 1&2 Cigarette and Match  
BS EN 1021-1 Cigarette  
ÖNORM A3800-B2-B3825-Q1 UK  
NF P 92-503 M3  
US CA TB 117-2013

CATEGORY G / CATEGORIA G



technical specifications / specifiche tecniche

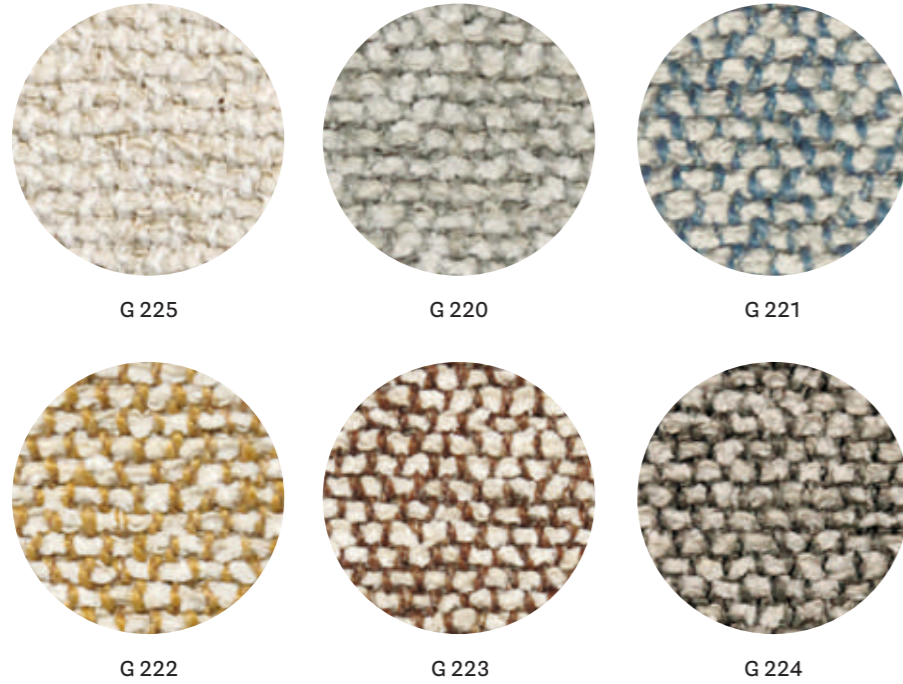


- COLLECTION / COLLEZIONE  
**kvadrat**  
G110÷G116: DIVINA MD  
G21÷G25: DIVINA MELANGE  
DESIGNER Finn Skødt
- COMPOSITION / COMPOSIZIONE  
100% New Wool
- ABRASION / ABRASIONE  
45.000 cycles, Martindale  
(EN ISO 12947)
- PILLING  
3, scale 1-5 (EN ISO 12945)
- LIGHT FASTNESS / SOLIDITÀ ALLA LUCE  
5-7, scale 1-8 (ISO 105-B02)
- SOUND ABSORPTION / ASSORBIMENTO ACUSTICO  
folded:  $\alpha_w = 0.70$  Class C (ISO 11654)
- FLAME RESISTANCE / RESISTENZA AL FUOCO  
AS/NZS 1530.3  
BS 5852 Crib 5  
BS 5852 Part 1  
BS 5867 part 2 type B  
EN 1021-1/2  
EN 13501, C-s1, d0, glued  
GB 50222 B1 with treatment  
IMO FTP Code 2010: Part 8
- APPROVED / OMOLOGATO  
NF D60-013  
NFPA 260  
ÖNORM B1/ Q1  
SN 198 898 5.3 with treatment  
UNI 9175 Classe 1 IM  
US CA TB 117-2013





CATEGORY G / CATEGORIA G



technical specifications / specifiche tecniche



• COLLECTION / COLLEZIONE  
**kvadrat - SAHCO**  
MOSS  
DESIGNER Vincent Van Duysen

• COMPOSITION / COMPOSIZIONE  
52% Cotton  
22% Viscose  
14% Polyacrylic  
6% Linen  
3% Nylon  
3% Polyester

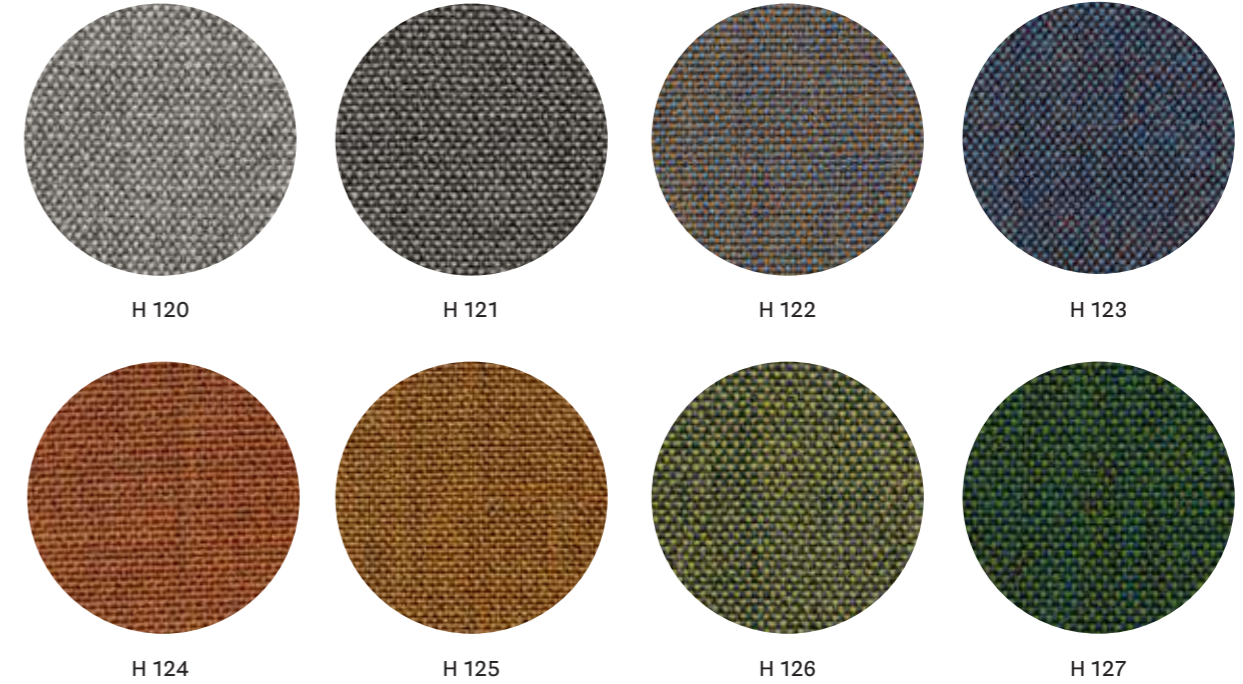
• ABRASION / ABRASIONE  
50.000 cycles, Martindale  
(EN ISO 12947)

• PILLING  
4-5, scale 1-5 (EN ISO 12945)

• LIGHT FASTNESS / SOLIDITÀ ALLA LUCE  
5-7, scale 1-8 (ISO 105-B02)

• FLAME RESISTANCE / RESISTENZA AL FUOCO  
BS 5852 crib 5 with treatment  
BS 5852 part 1  
EN 1021-1/2

CATEGORY H / CATEGORIA H



technical specifications / specifiche tecniche



• COLLECTION / COLLEZIONE  
**kvadrat**  
REMIX 3  
DESIGNER Giulio Ridolfo

• COMPOSITION / COMPOSIZIONE  
90% New Wool  
10% Nylon

• ABRASION / ABRASIONE  
100.000 cycles, Martindale  
(EN ISO 12947)

• RUBBING FASTNESS / SOLIDITÀ ALLO SFREGAMENTO  
Dry 4-5 and Wet 3-5, scale 1-5

(EN ISO 105-X12)

• PILLING  
4, scale 1-5 (EN ISO 12945)

• LIGHT FASTNESS / SOLIDITÀ ALLA LUCE  
5-7, scale 1-8 (EN ISO 105-B02)

• SOUND ABSORPTION / ASSORBIMENTO ACUSTICO  
folded:  $\alpha_w = 0.80$  Class B (EN ISO 354)

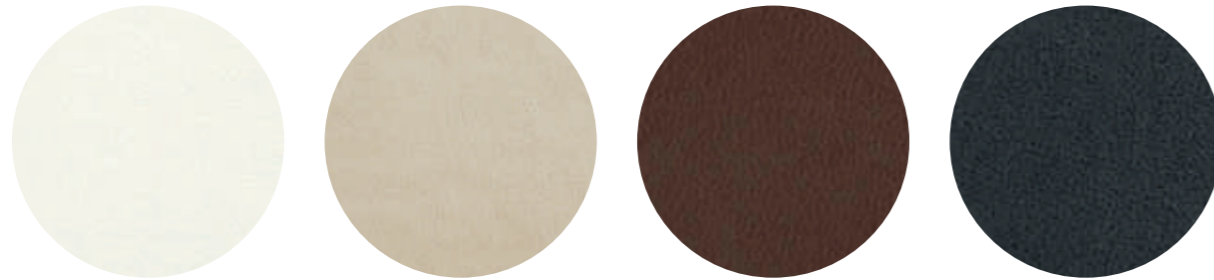
• FLAME RESISTANCE / RESISTENZA AL FUOCO  
AS/NZS 1530.3  
AS/NZS 3837 Class 2  
ASTM E84 class A  
BS 5852 Crib 5 with treatment

BS 5852 IGNITION SOURCE 3  
BS 5852 Part 1  
EN 1021 - 1/2  
GB 50222 B1 with treatment  
IMO FTP Code 2010: Part 7  
with treatment  
IMO FTP Code 2010: Part 8  
NF D60-013  
NFPA 260  
ÖNORM B1/Q1  
SN 198 898 5.3 with treatment  
UNI 9175 Classe 1 IM  
US Cal. Bull. 117-2013

• APPROVED / OMOLOGATO

PRODUCT CERTIFIED FOR LOW CHEMICAL EMISSIONS:  
UL COM/IGG  
UL 2918  
170166-420

CATEGORY C / CATEGORIA C

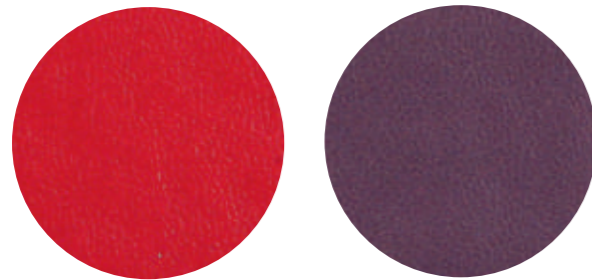


C 90

C 94

C 95

C 93



C 92

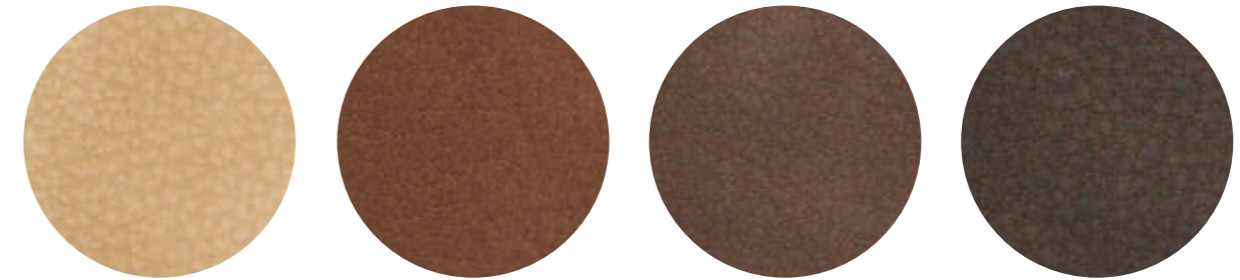
C 91

technical specifications / specifiche tecniche



- **COMPOSITION / COMPOSIZIONE**  
72% PVC  
25% Cotton  
3% Polyurethane
- **ABRASION / ABRASIONE**  
50.000 cycles, Martindale  
(EN ISO 5470-2)
- **RUBBING FASTNESS / SOLIDITÀ ALLO SFREGAMENTO**  
Dry and Wet 4-5, scale 1-5  
(UNI EN ISO 105-X12)
- **LIGHT FASTNESS / SOLIDITÀ ALLA LUCE**  
6, scale 1-8 (UNI EN ISO 105-B02)
- **FLAME RESISTANCE / RESISTENZA AL FUOCO**  
BS 5852-1 Part 1  
EN 1021-2  
IMO RESOLUTION A.652 (16): 1989  
UNI 9175 Classe 1 IM  
US CA TB 117-2013

CATEGORY C / CATEGORIA C



C 45

C 46

C 47

C 48

technical specifications / specifiche tecniche



- **COMPOSITION / COMPOSIZIONE**  
80% PVC  
18% PES  
2% Polyurethane
- **Simil-leather non-homogenous shade (vintage effect) / Finta pelle in tonalità non omogenea (effetto vintage)**
- **ABRASION / ABRASIONE**  
50.000 cycles, Martindale  
(EN ISO 5470-2)
- **RUBBING FASTNESS / SOLIDITÀ ALLO SFREGAMENTO**  
Dry and Wet 4-5, scale 1-5  
(UNI EN ISO 105-X12)
- **FLAME RESISTANCE / RESISTENZA AL FUOCO**  
BS 5852 Part 1 0,1  
EN 1021-1&2  
UNI 9175 Classe 1 IM



C 139

C 140

C 141

C 134

C 130

C 131

C 132

C 133

C 135

C 136

C 137

C 138

technical specifications / specifiche tecniche



- **COMPOSITION / COMPOSIZIONE**  
76% PVC  
22% PES  
2% Polyurethane
- **ABRASION / ABRASIONE**  
60.000 cycles, Martindale  
(ISO 5470-2)

- **RUBBING FASTNESS / SOLIDITÀ ALLO SFREGAMENTO**  
Dry and Wet 4-5, scale 1-5  
(ISO 105-X12)
- **LIGHT FASTNESS / SOLIDITÀ ALLA LUCE**  
6, scale 1-8 (ISO 105-B02)

- **FLAME RESISTANCE / RESISTENZA AL FUOCO**  
BS 5852-1 match test  
EN 1021 Part 1-2  
UNI 9175 Classe 1 IM  
US CA TB 117-2013



C 14

C 21

C 15

C 17

C 13

C 12

C 20

C 11

C 18

C 22

C 10

technical specifications / specifiche tecniche



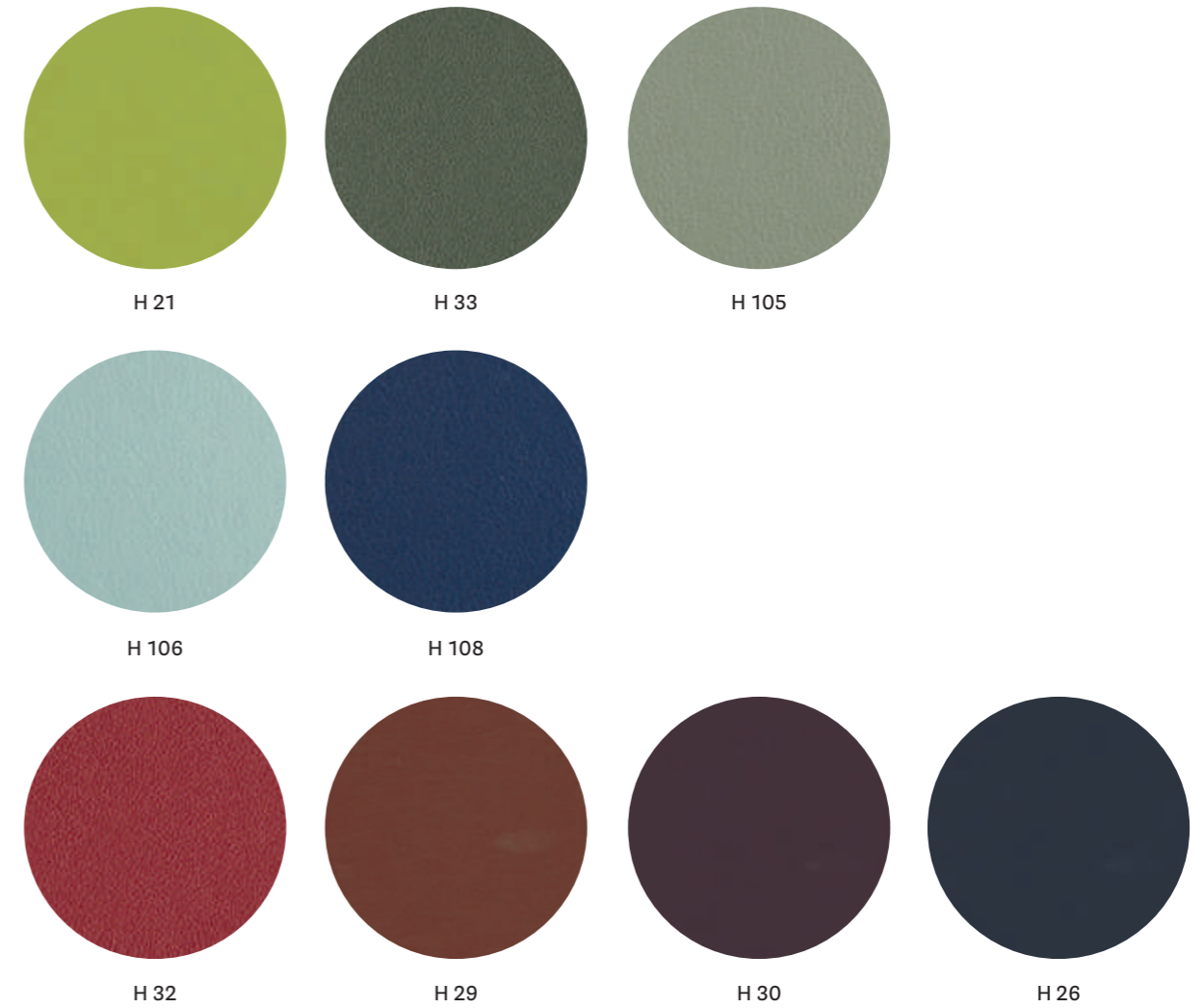
- **COMPOSITION / COMPOSIZIONE**  
85% PVC  
15% Cotton
- **ABRASION / ABRASIONE**  
150.000 cycles, Martindale  
(ISO 5470-2)

- **LIGHT FASTNESS / SOLIDITÀ ALLA LUCE**  
≥6, scale 1-8 (EN ISO 105-B02)
- **FLAME RESISTANCE / RESISTENZA AL FUOCO**  
B2 (DIN 4102)  
BS 5852 Crib 5  
EN 1021.1-2  
EN 13501-1 - Cs3do  
FAR 25853 App F Part 1

- **IMO RESOLUTION A.652**  
NF D60-013 - AM 18  
NFP 92503 M1  
NY/NJ - Port Authority  
UFAC Fabric Class 1  
German fire standard B1 (except C12 and C22)  
US CATB 117  
US CATB 133

- **APPROVED / OMOLOGATO**





technical specifications / specifiche tecniche



- COMPOSITION / COMPOSIZIONE  
63% Polyurethane  
29% Cotton  
8% PES
- ABRASION / ABRASIONE  
150.000 cycles, Martindale  
(UNI EN ISO 12947-2)

- LIGHT FASTNESS / SOLIDITÀ ALLA LUCE  
5-6, scale 1-8 (UNI EN ISO 105-B02)
- FLAME RESISTANCE / RESISTENZA AL FUOCO  
BS 5852 Crib 5  
BS 5852 Part 1-2  
EN 1021 Part 1-2  
IMO resolution FTP Code 2010

IMO resolution A.652 (16):1989  
UNI 9175 Classe 1 IM  
US CA TB 117-2013

CATEGORY P / CATEGORIA P



technical specifications / specifiche tecniche

- COLLECTION / COLLEZIONE  
  
LINEA
- COMPOSITION / COMPOSIZIONE  
Mid grain leather  
Pelle mezzo fiore
- RUBBING FASTNESS / SOLIDITÀ ALLO SFREGAMENTO  
Dry (500 Cycles) and Wet (250 Cycles) ≥4  
(UNI EN ISO 11640:1998)

- LIGHT FASTNESS / SOLIDITÀ ALLA LUCE  
≥5 (UNI EN ISO 105 B02) (MET.5)
- FLAME RESISTANCE / RESISTENZA AL FUOCO  
BS 5852:1979  
BS EN 1021-1-2:2006  
IMO RES A652 (16)

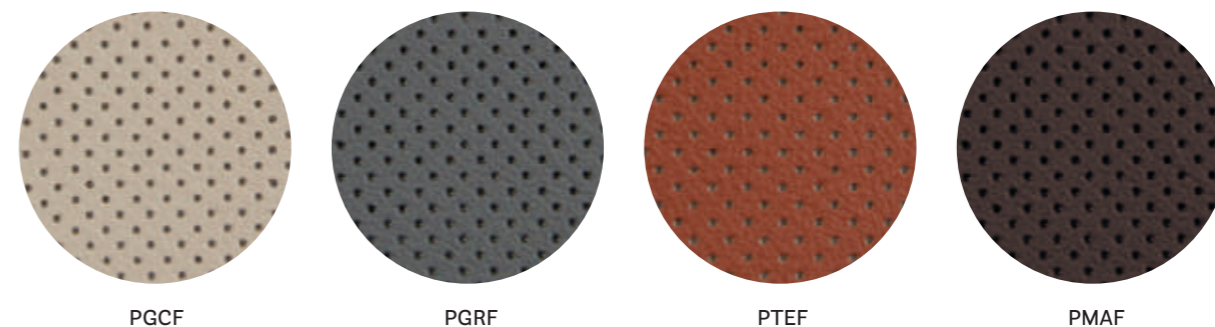
cleaning / lavaggio

Clean with a damp cloth using water. Do not use detergents, solvents, bleached, abrasives.  
Pulire con un panno umido d'acqua. Non usare detersivi, solventi, candeggianti, abrasivi.

- APPROVED / OMOLOGATO



CATEGORY P / CATEGORIA P



technical specifications / specifiche tecniche

- COLLECTION / COLLEZIONE  
  
LINEA
- COMPOSITION / COMPOSIZIONE  
Perforated mid grain leather  
Pelle mezzo fiore traforata
- RUBBING FASTNESS / SOLIDITÀ ALLO SFREGAMENTO  
Dry (500 Cycles) and Wet (250 Cycles) ≥4  
(UNI EN ISO 11640:1998)

- LIGHT FASTNESS / SOLIDITÀ ALLA LUCE  
≥5 (UNI EN ISO 105 B02) (MET.5)
- FLAME RESISTANCE / RESISTENZA AL FUOCO  
BS 5852:1979  
BS EN 1021-1-2:2006  
IMO RES A652 (16)

cleaning / lavaggio

Clean with a damp cloth using water. Do not use detergents, solvents, bleached, abrasives.  
Pulire con un panno umido d'acqua. Non usare detersivi, solventi, candeggianti, abrasivi.

- APPROVED / OMOLOGATO



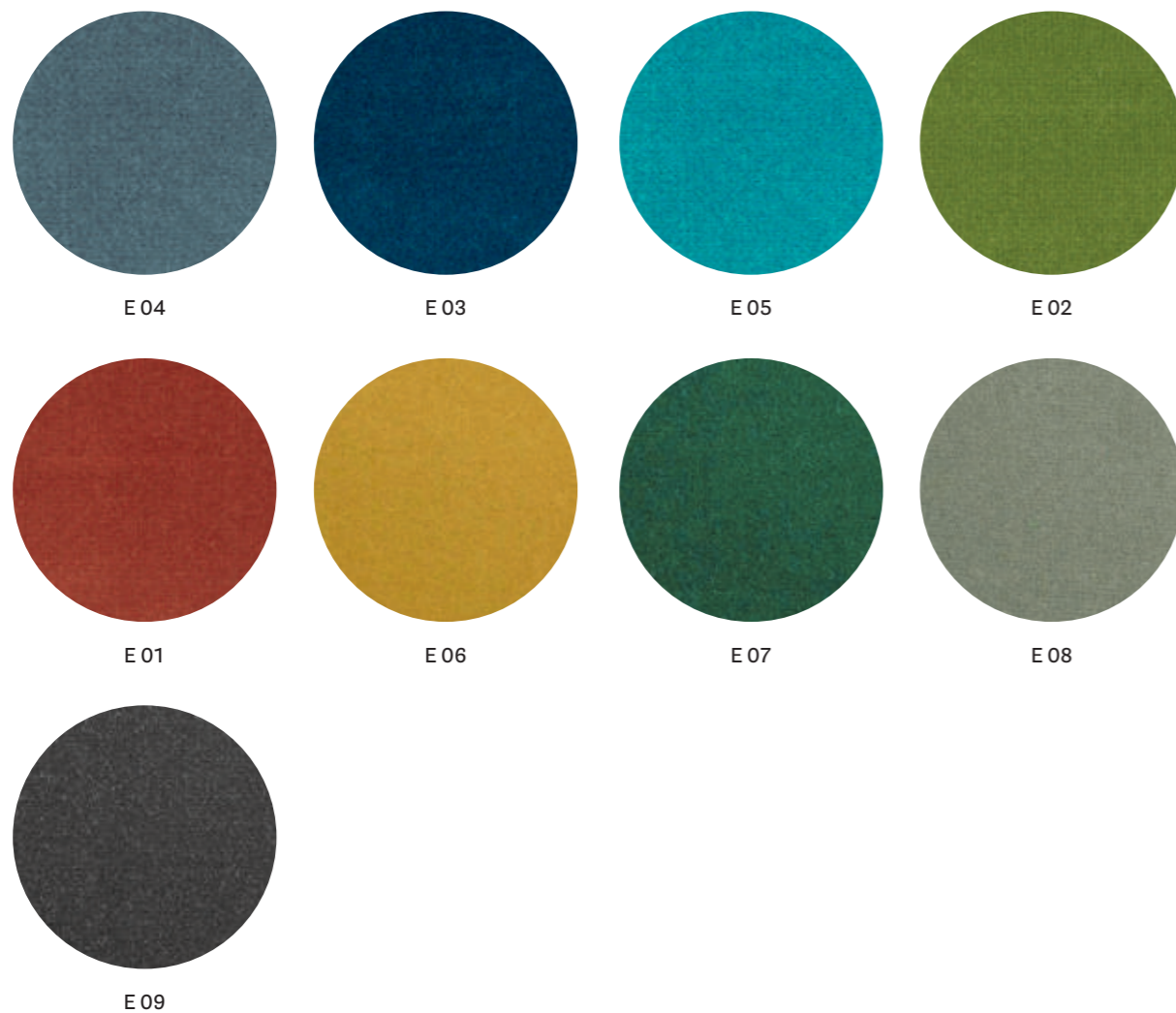
only for collections / solo per collezioni



Inner part of the back, upper part of the seat.  
Lato interno dello schienale e parte superiore del sedile.

Vic / Vic Metal

CATEGORY E / CATEGORIA E



technical specifications / specifiche tecniche

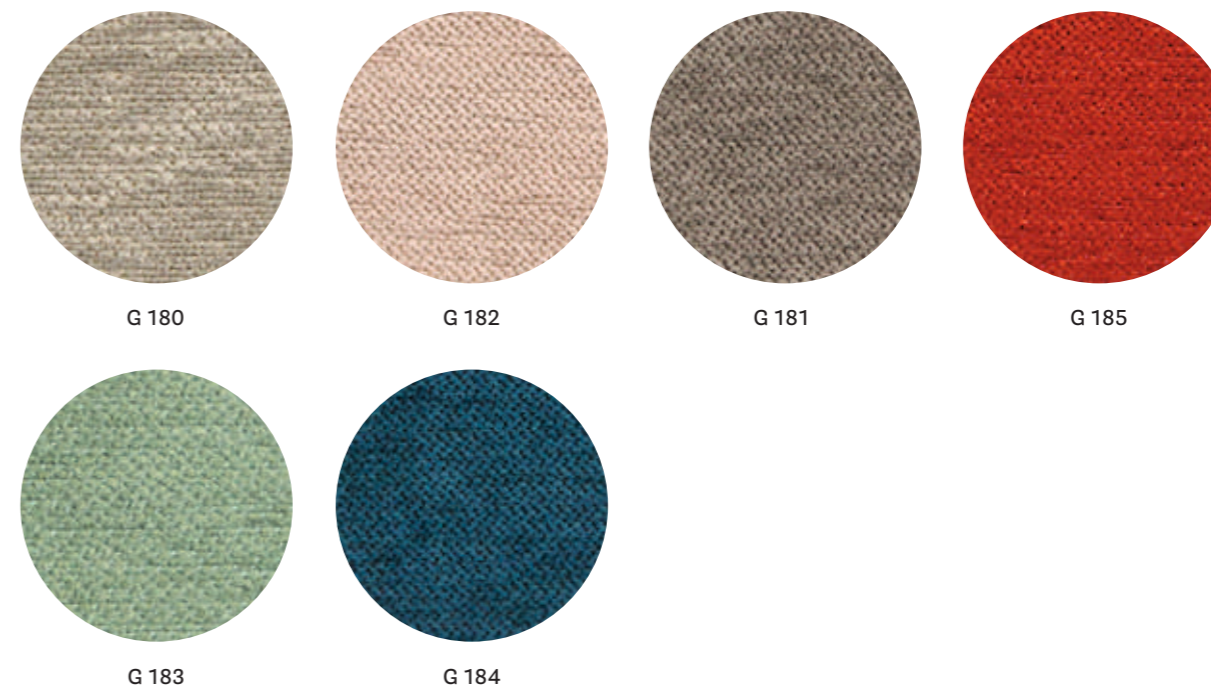


- COLLECTION / COLLEZIONE  
**DEDAR**  
ADAMO & EVA
- COMPOSITION / COMPOSIZIONE  
100% Cotton

- ABRASION / ABRASIONE  
50.000 cycles, Martindale (ISO 12947-2)
- RUBBING FASTNESS / SOLIDITÀ ALLO SFREGAMENTO  
Dry 4-5 and Wet 3-5, scale 1-5  
(ISO 105-X12)

- LIGHT FASTNESS / SOLIDITÀ ALLA LUCE  
4-6, scale 1-8 (ISO 105-B02)

CATEGORY G / CATEGORIA G



technical specifications / specifiche tecniche



- COLLECTION / COLLEZIONE  
**kvadrat** - STILL  
DESIGNER Georgina Wright
- COMPOSITION / COMPOSIZIONE  
100% TREVIRA CS®
- ABRASION / ABRASIONE  
50.000 cycles, Martindale  
(EN ISO 12947)
- RUBBING FASTNESS / SOLIDITÀ ALLO SFREGAMENTO  
Dry and Wet 4-5, scale 1-5  
(EN ISO 105-X12)

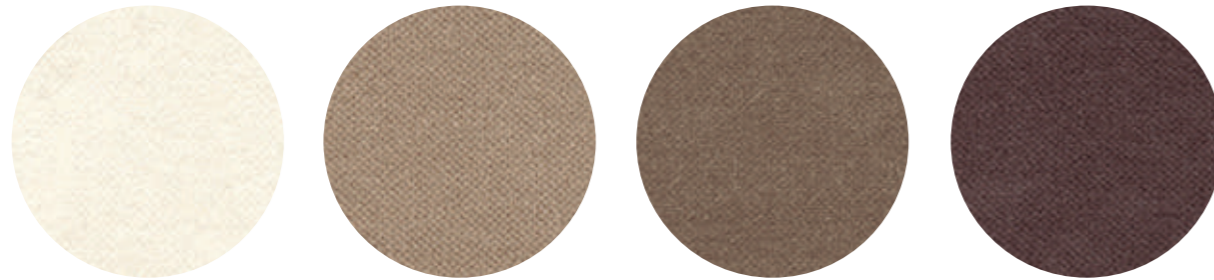
- PILLING  
4-5, scale 1-5 (EN ISO 12945)
- LIGHT FASTNESS / SOLIDITÀ ALLA LUCE  
5-7, scale 1-8 (ISO 105-B02:2014)
- SOUND ABSORPTION / ASSORBIMENTO ACUSTICO  
folded:  $\alpha_w = 0.85$  Class B (ISO 11654)
- FLAME RESISTANCE / RESISTENZA AL FUOCO  
ASTM E84 class A  
BS 5852 Crib 5  
BS 5852 Part 1  
BS 5867 Part 2 type B

- DIN 4102 B1  
EN 1021-1/2  
EN 13501-1, B-S1, d0  
IMO FTP Code 2010:Part 8  
NF D60-013  
NF P92 57 M1  
NFPA 701  
ÖNORM B1/Q1  
SN 198 898 5.2  
UNI 9175 Classe 1 IM  
UNI 9177 Classe 1  
US CA TB 117-2013

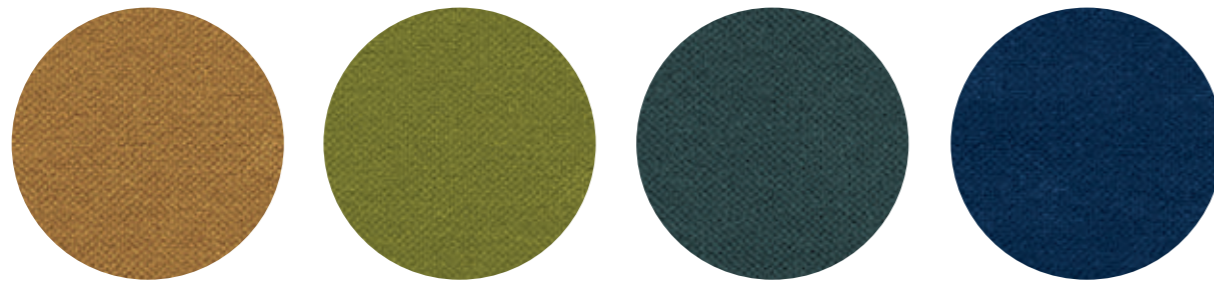
- APPROVED / OMOLOGATO



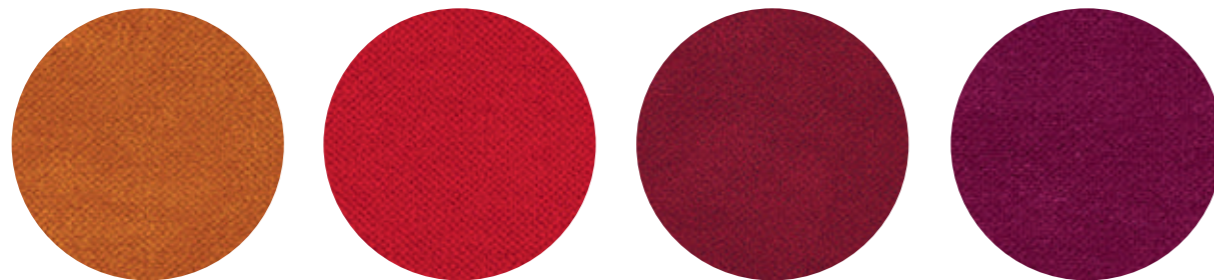
CATEGORY H / CATEGORIA H



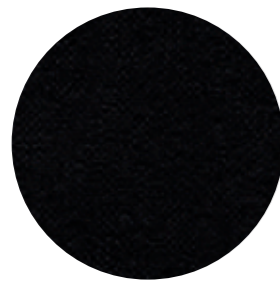
H 40 H 44 H 45 H 46



H 43 H 49 H 51 H 50



H 48 H 53 H 42 H 47



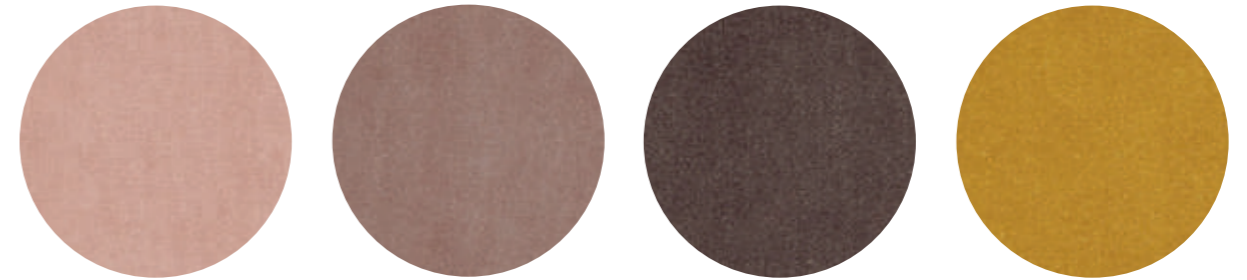
H 41

technical specifications / specifiche tecniche

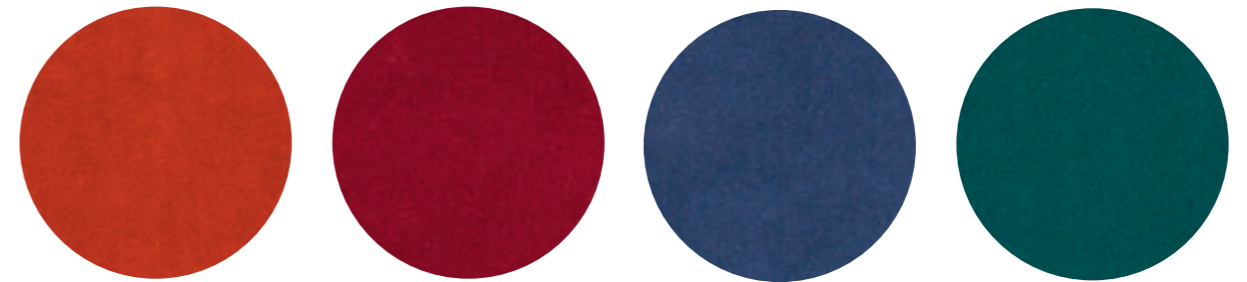


- COMPOSITION / COMPOSIZIONE  
100% TREVIRA CS®
- ABRASION / ABRASIONE  
190.000 cycles, Martindale (EN ISO 12947-2)
- RUBBING FASTNESS / SOLIDITÀ ALLO SFREGAMENTO  
Dry and Wet 4-5, scale 1-5 (EN ISO 105-X12)
- PILLING  
5, scale 1-5 (EN ISO 12945-2)
- LIGHT FASTNESS / SOLIDITÀ ALLA LUCE  
5, scale 1-8 (EN ISO 105-B02)
- SOUND ABSORPTION / ASSORBIMENTO ACUSTICO  
folded:  $\alpha_w = 0.70$  (EN ISO 354:2003)
- FLAME RESISTANCE / RESISTENZA AL FUOCO  
BS 5852 Part 0,1  
DIN 4102 B1  
EN 1021-1&2  
IMO MSC 307(88) Annex 1 Part 7-8  
NF P 92-503-507 M1  
NFPA 260:2019  
UNI 9177 Classe 1  
UNI 9175 Classe 1 IM  
US CA TB 117-2013

CATEGORY N / CATEGORIA N



N 20 N 21 N 22 N 23



N 24 N 25 N 26 N 27

technical specifications / specifiche tecniche



- COLLECTION / COLLEZIONE  
**kvadrat-SAHCO**  
BALBOA  
DESIGNER Najberg
- COMPOSITION / COMPOSIZIONE  
100% Polyester FR
- ABRASION / ABRASIONE  
100.000 cycles, Martindale (EN ISO 12947)
- RUBBING FASTNESS / SOLIDITÀ ALLO SFREGAMENTO  
Dry 5 and Wet 4-5, scale 1-5 (EN ISO 105-X12)
- PILLING  
4, scale 1-5 (EN ISO 12945-2)
- LIGHT FASTNESS / SOLIDITÀ ALLA LUCE  
4-6, scale 1-8 (EN ISO 105-B02)
- SOUND ABSORPTION / ASSORBIMENTO ACUSTICO  
folded:  $\alpha_w = 0.80$  Class B (ISO 11654)
- FLAME RESISTANCE / RESISTENZA AL FUOCO  
BS 5852 Crib 5  
BS 5867 Part 2 Type B  
DIN 4102 B1  
EN 1021-1/2  
IMO FTP Code 2010: Part 8  
NFPA 701  
ÖNORM B1/Q1  
SN 198 898 5.2  
UNI 9175 1IM  
US Cal. Bull. 117-2013

APPROVED / OMOLOGATO

